

# Public Meeting #1

Burlington-Winooski BF RAIZ(2)  
Burlington STP 5000(29)

September 19, 2023

---



**BURLINGTON  
WINOOSKI  
BRIDGE**



# Introductions

---

- **Bob Klinefelter** – VTrans Structures Project Manager
- **Mike LaCroix** – VTrans Highway Safety & Design Project Manager
- **Carolyn Cota** – VTrans Structures Program Manager
- **Jennifer Zorn** – HNTB Public Outreach
- **Josh Olund** – HNTB Project Manager

# Presentation Logistics

---



Q&A to follow presentation



Make sure your volume is turned up; presenters cannot see or hear you.



Online questions will be shared through the “Virtual Podium”



We will alternate questions from in-person and online attendees

# Agenda

---



Project Overview



Design-Build Contracting



Public Involvement



Project Delivery



Questions

# Things to Remember

---

1

We Want  
Your Input

2

There Will  
Be More  
Meetings

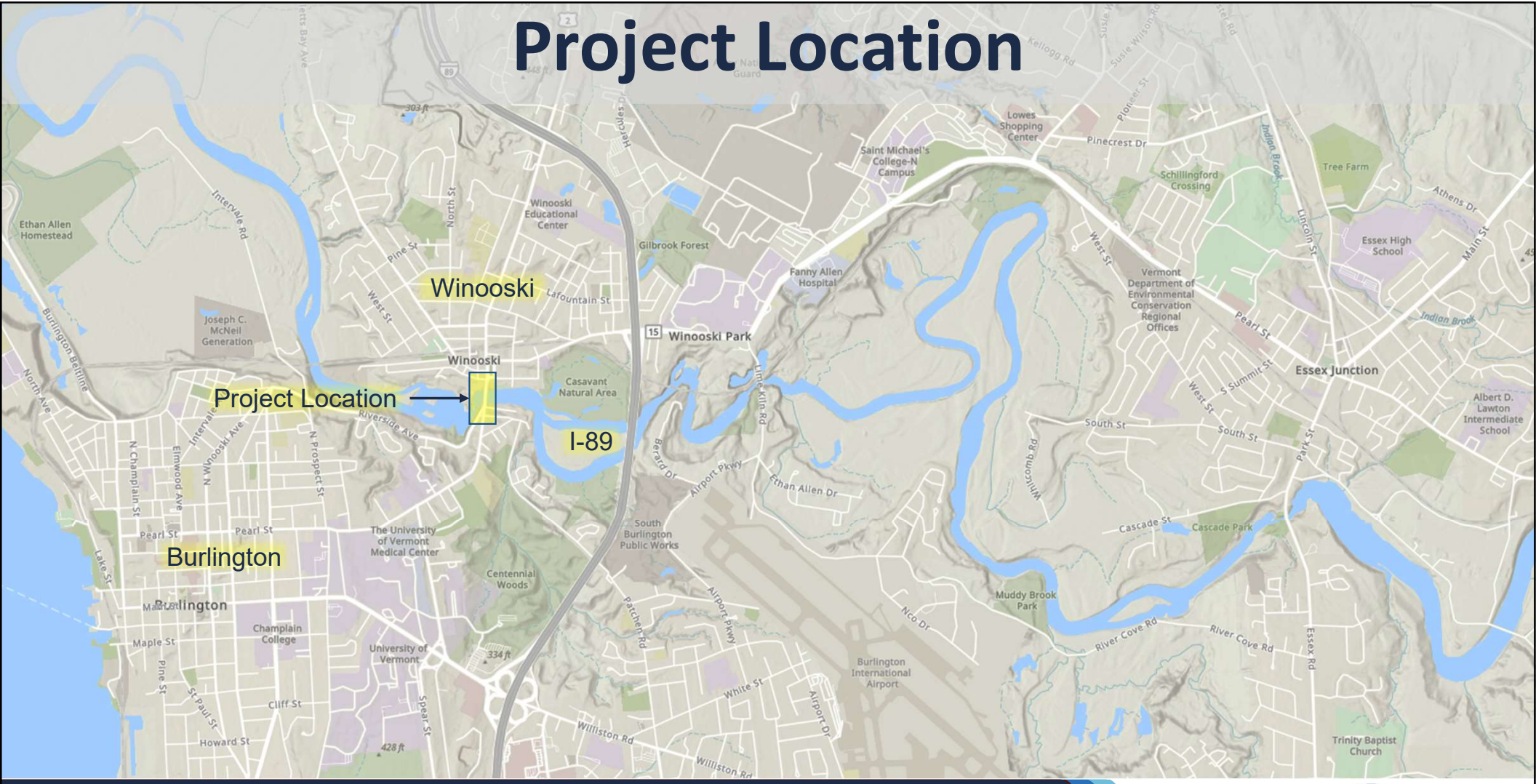
3

Project is  
Evolving

# Project Overview



# Project Location



# Project Site



Image Landsat / Copernicus



# Project Area



# Project Focal Points

Intersection

Bridge

# Existing Conditions - Bridge

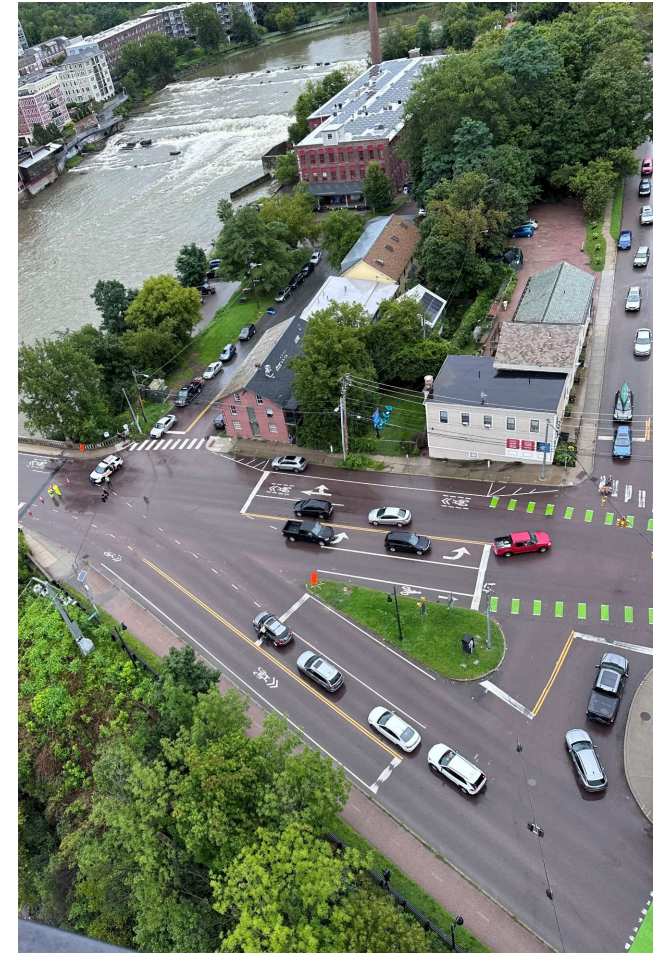
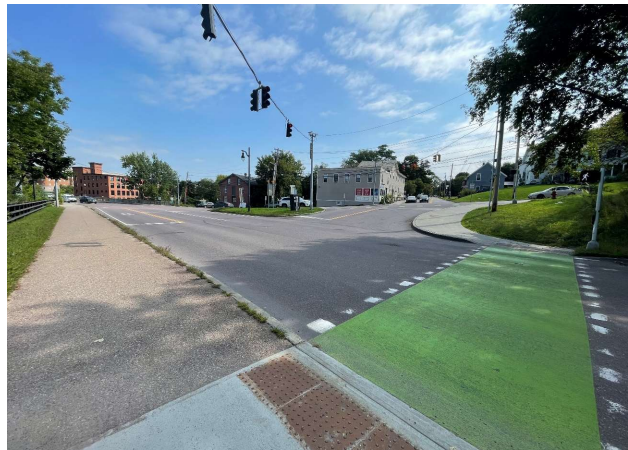
---

- Built in 1928
- Pack Rust/Warping
- Deck Delaminations
- Substandard Railing
- Non-Redundant
- Substandard Bridge Width



# Existing Conditions - Intersection

- Geometrically Complex
- Multiple Signals
- Shared Bike/Vehicle Lanes
- History of Crashes and Queuing





# Project Reports

- Bridge Scoping Report
- Intersection Scoping Report
- Bridge Grant Application

COLCHESTER AVENUE/RIVERSIDE AVENUE  
Burlington, Vermont

Final Scoping Report



Prepared by:  Prepared for:  

CHITTENDEN COUNTY REGIONAL PLANNING COMMISSION

SCOPING REPORT  
FOR  
MAIN STREET BRIDGE (US ROUTES 2 & 7) OVER THE  
WINOOSKI RIVER



  May 30, 2019

WINOOSKI RIVER  
BRIDGE REPLACEMENT  
Enhancing the Economic and  
Social Connections Between Communities  
CHITTENDEN COUNTY  
CITIES OF BURLINGTON AND WINOOSKI, VERMONT



CHITTENDEN COUNTY REGIONAL PLANNING COMMISSION

SCOPING REPORT

FOR

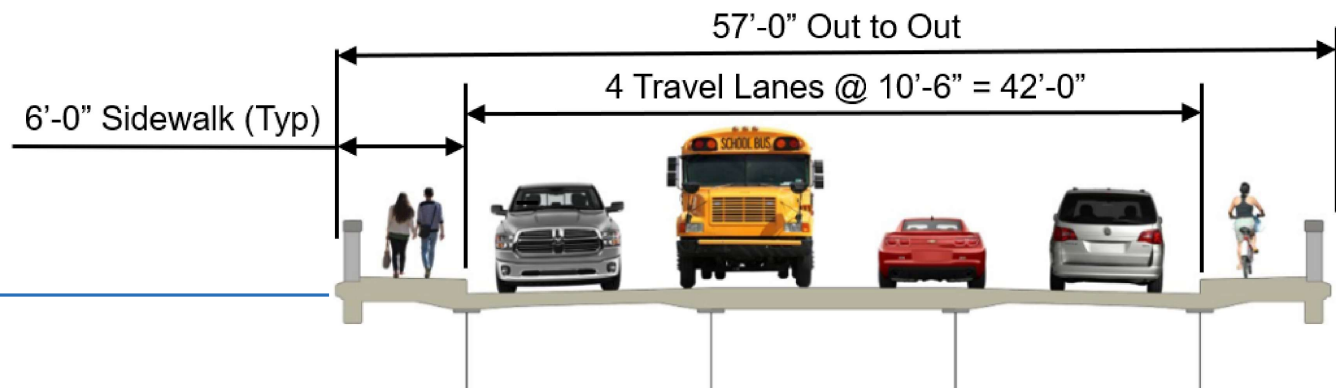
MAIN STREET BRIDGE (US ROUTES 2 & 7) OVER THE  
WINOOSKI RIVER

# Bridge Scoping Report (2019)

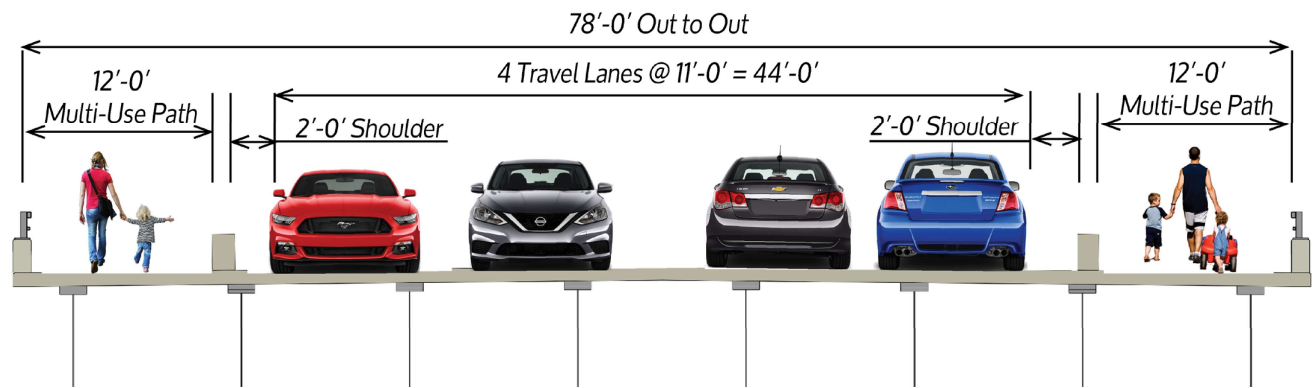
- Recommended replacement
- Focus on bike/pedestrian accommodations
- Conceptual construction methods



# Bridge Features



- Complete replacement
- Wider lanes and shoulders
- Separated multi-use paths



# Intersection Scoping Report (2019)

- Recommended 4-Way intersection
- Focus on bike/pedestrian accommodations, mobility, and safety

COLCHESTER AVENUE/RIVERSIDE AVENUE  
Burlington, Vermont

Final Scoping Report



Prepared by:



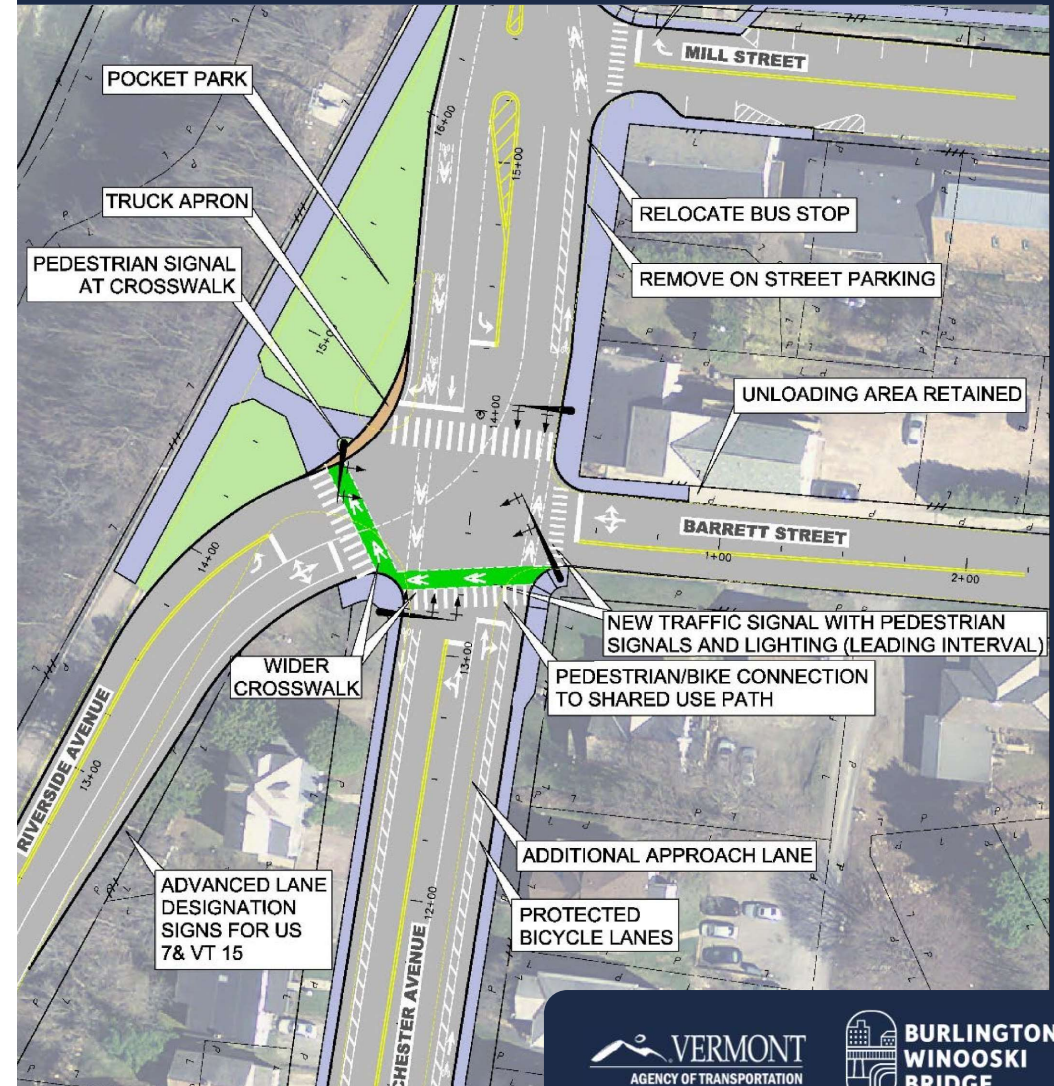
Prepared for:





# Intersection Features

- Consolidated intersection
  - Improved safety and mobility
- Emphasis on Bike/Pedestrian improvements



# Bridge Grant Application (2022)

---

- Obligated to:
  - Improve safety
  - Address bike/pedestrian accommodations
  - Complement the natural and cultural environment
  - Provide appealing bridge



**WINOOSKI RIVER  
BRIDGE REPLACEMENT**  
Enhancing the Economic and  
Social Connections Between Communities  
*CHITTENDEN COUNTY  
CITIES OF BURLINGTON AND WINOOSKI, VERMONT*

# Project Compilation

---

- Concept Plans complete
- Need to combine recommendations of intersection and bridge project

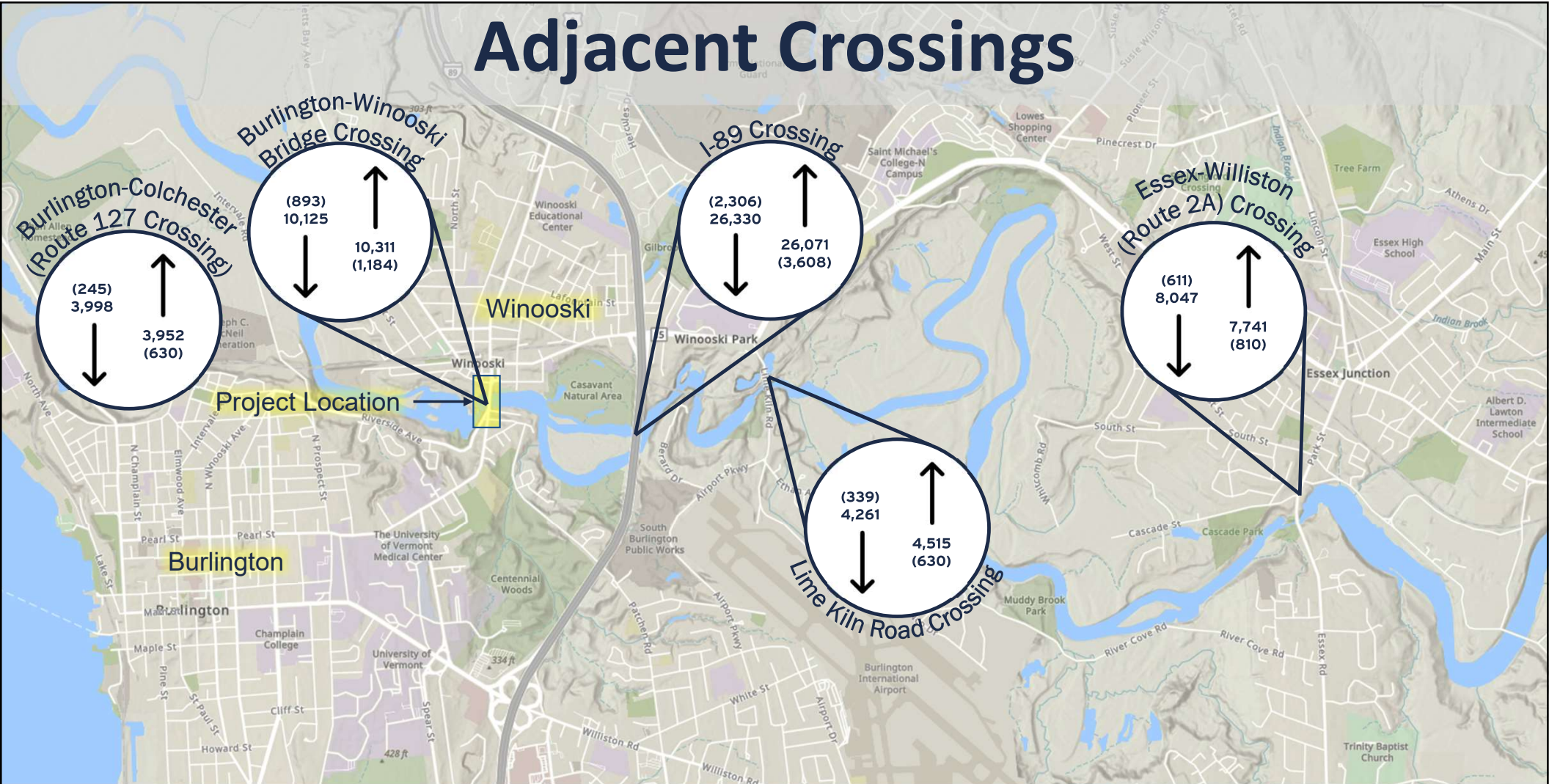


# Maintenance of Traffic

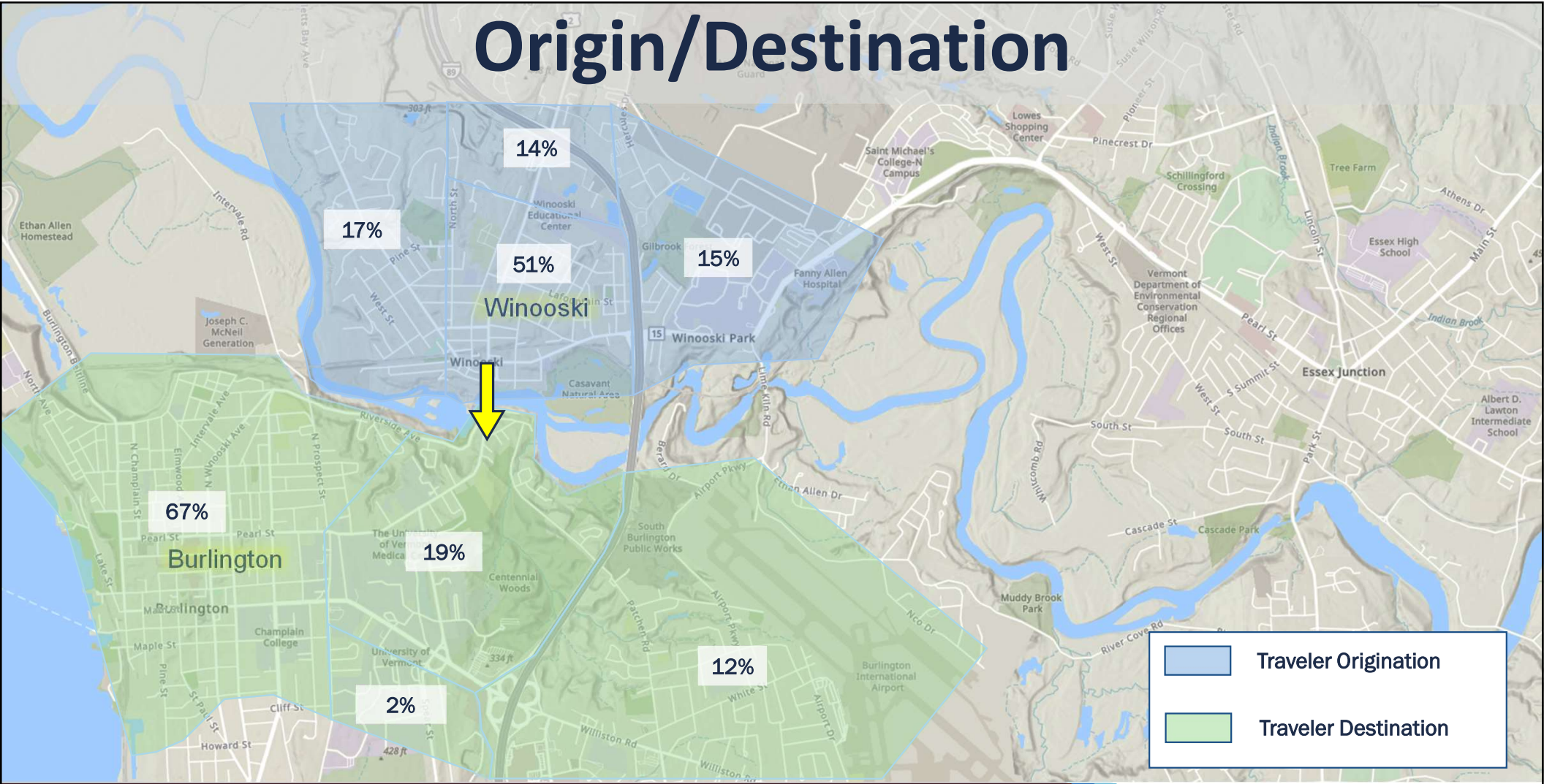
- 25,000 Vehicles & 300 Pedestrians per day
- Need to balance:
  - Minimize impact to traveling public, and
  - Safe, sufficient construction site
- Utilize combination of:
  - Temporary lane closures
  - Temporary bridge closure

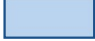



# Adjacent Crossings

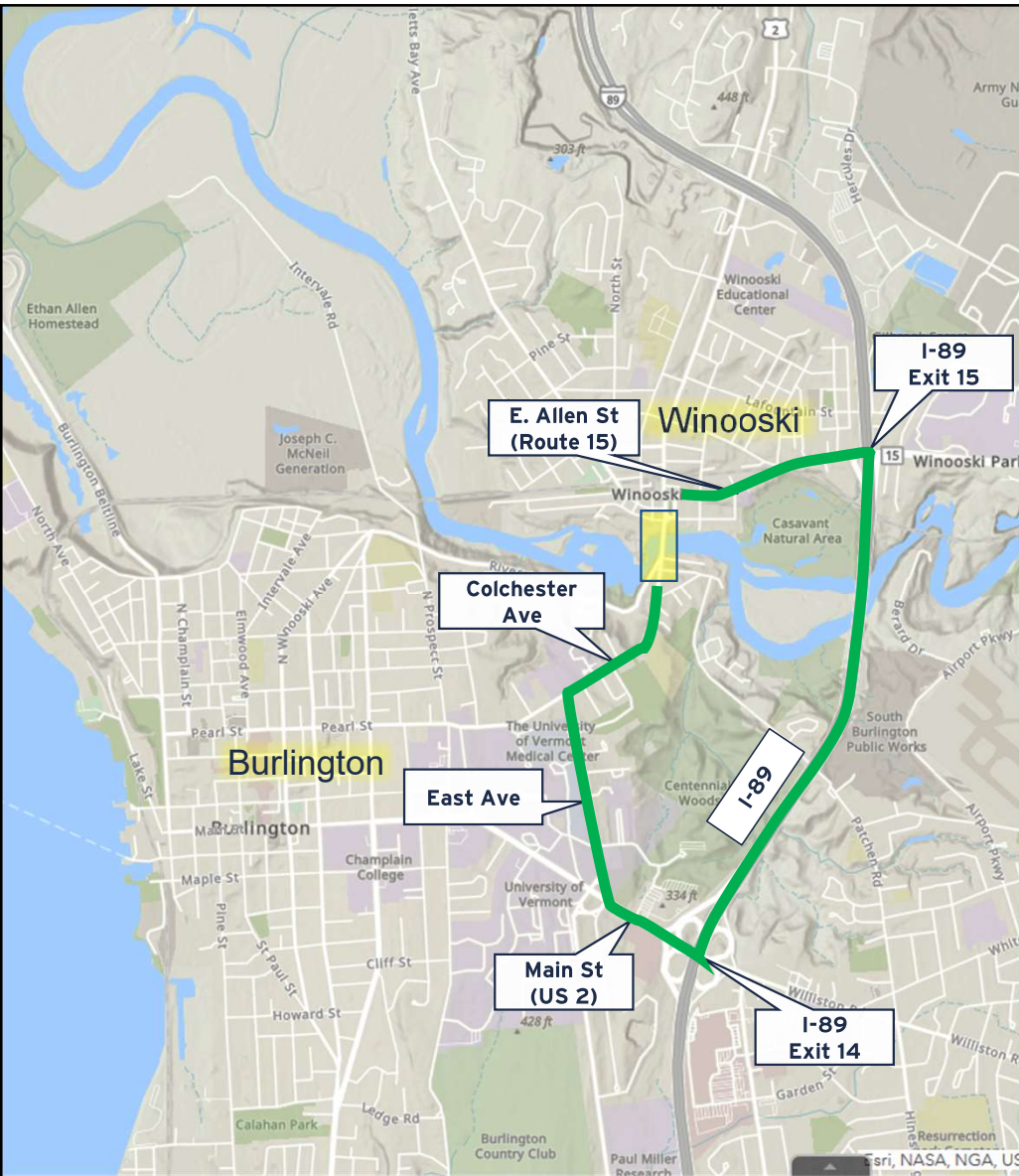


# Origin/Destination



 Traveler Origin

 Traveler Destination

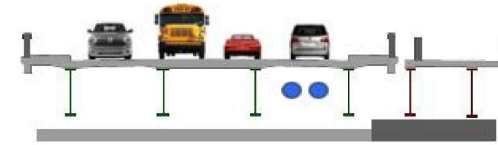


# Temporary Detour

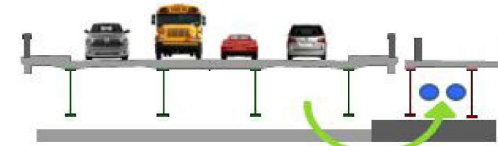
- Shortest vehicular detour
- Effects on adjacent roads and intersections
- **All Pedestrians Maintained On Site!**

# Bridge Phasing

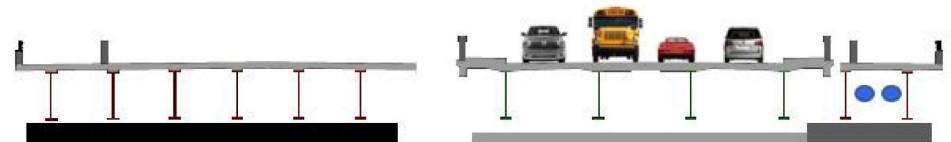
- Build new bridge, next to existing bridge
- Transfer Pedestrians and utilities
- Temporary 4 to 6 week closure for demolition and sliding new bridge together



Phase 1 – Widened Portion of Substructure Units and Superstructure Constructed



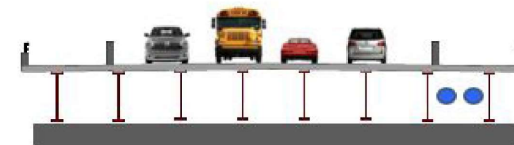
Phase 1a – Utilities Relocated



Phase 2 – New Bridge Superstructure Built Adjacent to Existing Bridge on Temporary Supports



Phase 3 – Bridge Closed to Traffic, Existing Bridge Superstructure Removed, and New Bridge Superstructure Slid to Final Location



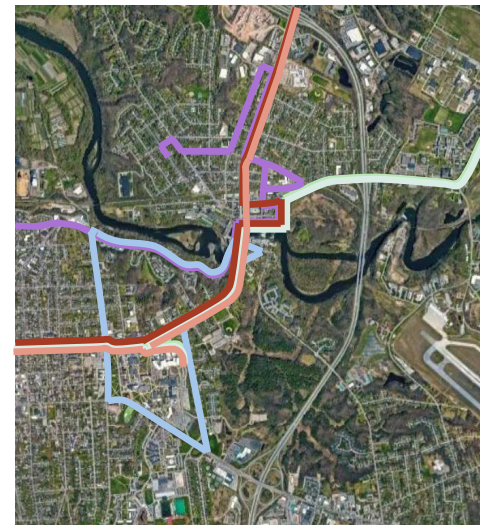
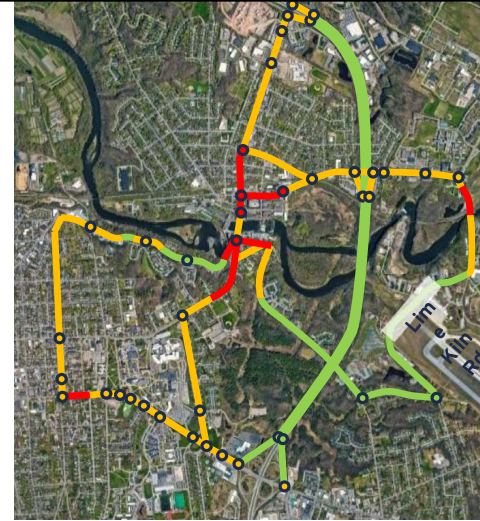
Phase 4 - New Bridge Opened to Traffic



# Maintenance of Traffic – Next Steps

---

- Understand existing conditions/operations
- Coordinate with
  - Emergency Services
  - Transit Lines
  - Other Stakeholders
- Identify off-site improvements
- Develop user costs



# Design-Build Contracting



# What is Design-Build Contracting?

---

Project delivery method that:

- Incorporates final design and construction into a single contract.
- Places increased responsibilities on the Contractor in an attempt to reduce risks and costs to the State.

# Why Use Design-Build Contracting?

---



**Promotes Innovation**



**Improves Design/Construction Efficiencies**



**Reduces Construction Costs**



**Reduces Construction Schedule**

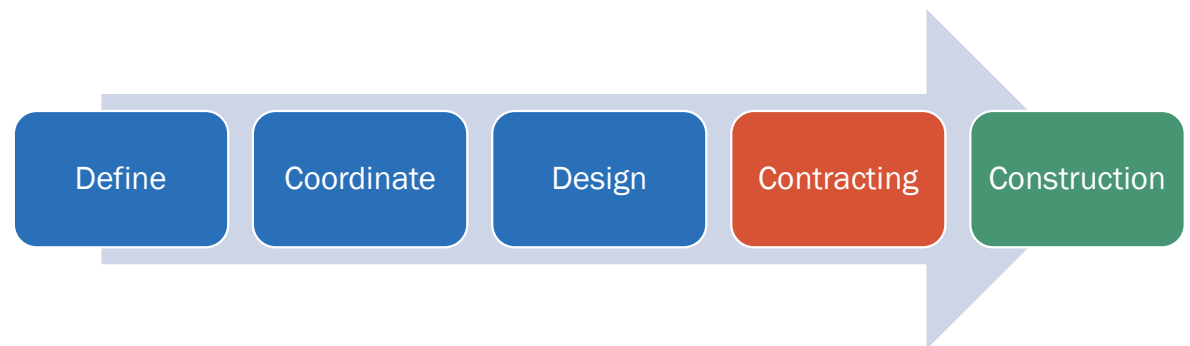
# Design-Bid-Build (Traditional) Contracting

## VTrans

- Preliminary Design
- Environmental Coordination
- Final Design
- Right of Way Process
- Permitting
- Utility Relocation
- Construction Contracting
- Public Outreach
- Construction Inspection
- Construction Oversight

## Contractor

- Construction



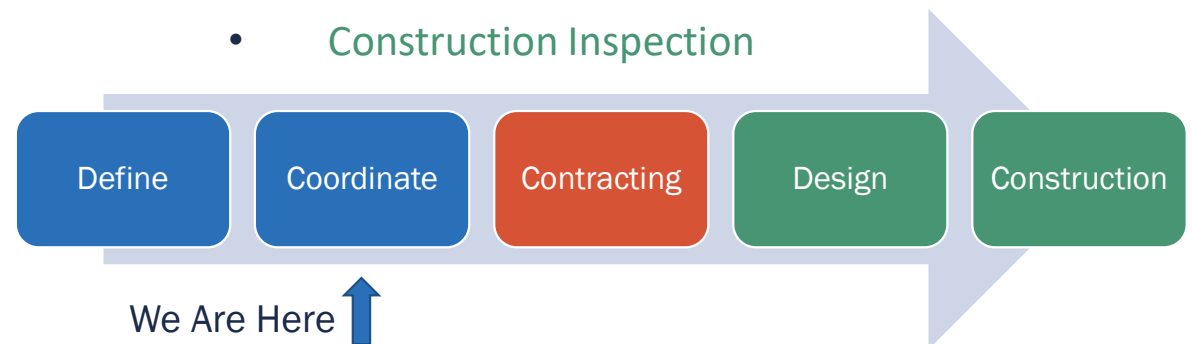
# Design-Build Contracting

## VTrans

- Preliminary Design
- Environmental Coordination
- ~~Final Design~~
- Right of Way Process
- ~~Permitting~~
- Utility Coordination
- Construction Contracting
- Public Outreach
- ~~Construction Inspection~~
- Construction Oversight

## Contractor

- Final Design
- Utility Relocation
- Permitting
- Public Outreach
- Construction
- Construction Inspection



# What Does This Mean?

---

- VTrans will develop design and construction guidelines – need to provide leeway for innovation to occur
- Final features (number of bridge supports, site restoration, etc) may be the decision of the Contractor
- Checks and balances with VTrans maintained

# Public Outreach





# We Want Your Input

Vermont Agency of Transportation is committed to a public outreach process that is open and inclusive



# Public Outreach Process

---

## Public Input

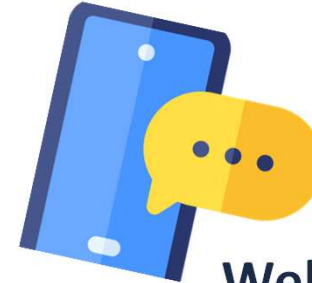


## Assists the Project Team

- Project Advisory Committee
- Public Meetings
- Community Events
- Door-to-Door Outreach
- Direct Mailers
- Project Website
- Translation and Interpretation services at key points

- To reach broad community and users of the bridge
- Influence the project design
- Help us understand the impacts and potential ways to avoid or minimize impacts

# Online Communication Tools



## Website

### Public Information Management Application (PIMA)

- Innovative and interactive tool to bolster public outreach
- Integrates with project website
- Incorporates Google Translate to facilitate multiple languages
- Surveys/e-blast updates/interactive mapping tool and more
- Facilitates hybrid public meetings
- Provides detailed analytics

- Integrated with language translation software
- Translation of 14 target languages
- Project Overview
- News & Events
- Project Documents
- Frequently Asked Questions
- Submit comments
- Sign up for email updates

# Ways to Stay Informed & Engaged

---



- Attend public meetings
- Sign-up for email updates
- Submit comments on the website
- Attend events





## Community Event Arts So Wonderful

Saturday, September 23<sup>rd</sup>  
10:00 AM to 6:00 PM

---

- Fun for the entire family
- Help ASW touchup the mural
- Meet your neighbors
- Light refreshments will be provided

# Project Delivery

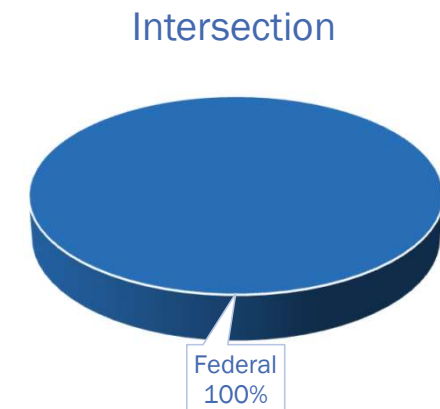
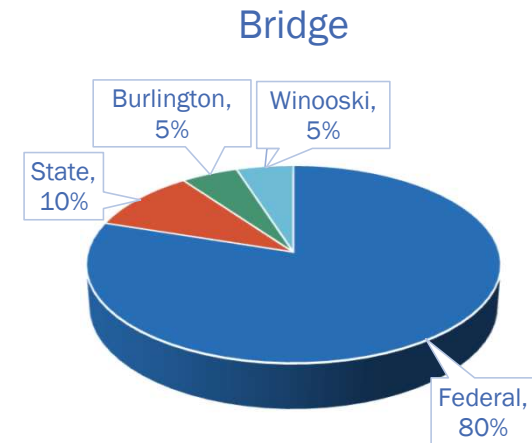


# Schedule



# Project Costs and Funding

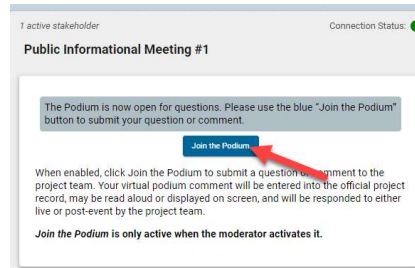
- Project Received a Federal RAISE Grant worth approximately \$24.8-million
- Total Project costs are *conceptually* estimated to be approximately \$50-\$60-million



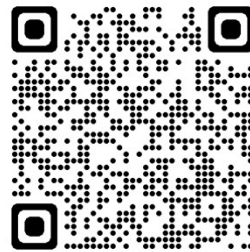


# Questions?

- 1) Please wait to be called on.
- 2) State your name, relation to the project, and your question or comment.
- 3) Online attendees – The Virtual Podium is now open
  - Questions/Comments will appear below the presentation on your screen as they are answered
  - The project team will follow up via email if needed



**BURLINGTON  
WINOOSKI  
BRIDGE**



[https://burlingtonwinooskibrige.vtranspr  
ojects.vermont.gov/](https://burlingtonwinooskibrige.vtranspr<br/>ojects.vermont.gov/)



**THE CITY  
OF BURLINGTON**

